

Lecture 25: more exotic routing (mobile IP and multicast)

colleague

src 12.33.88.13
dest (colleague)

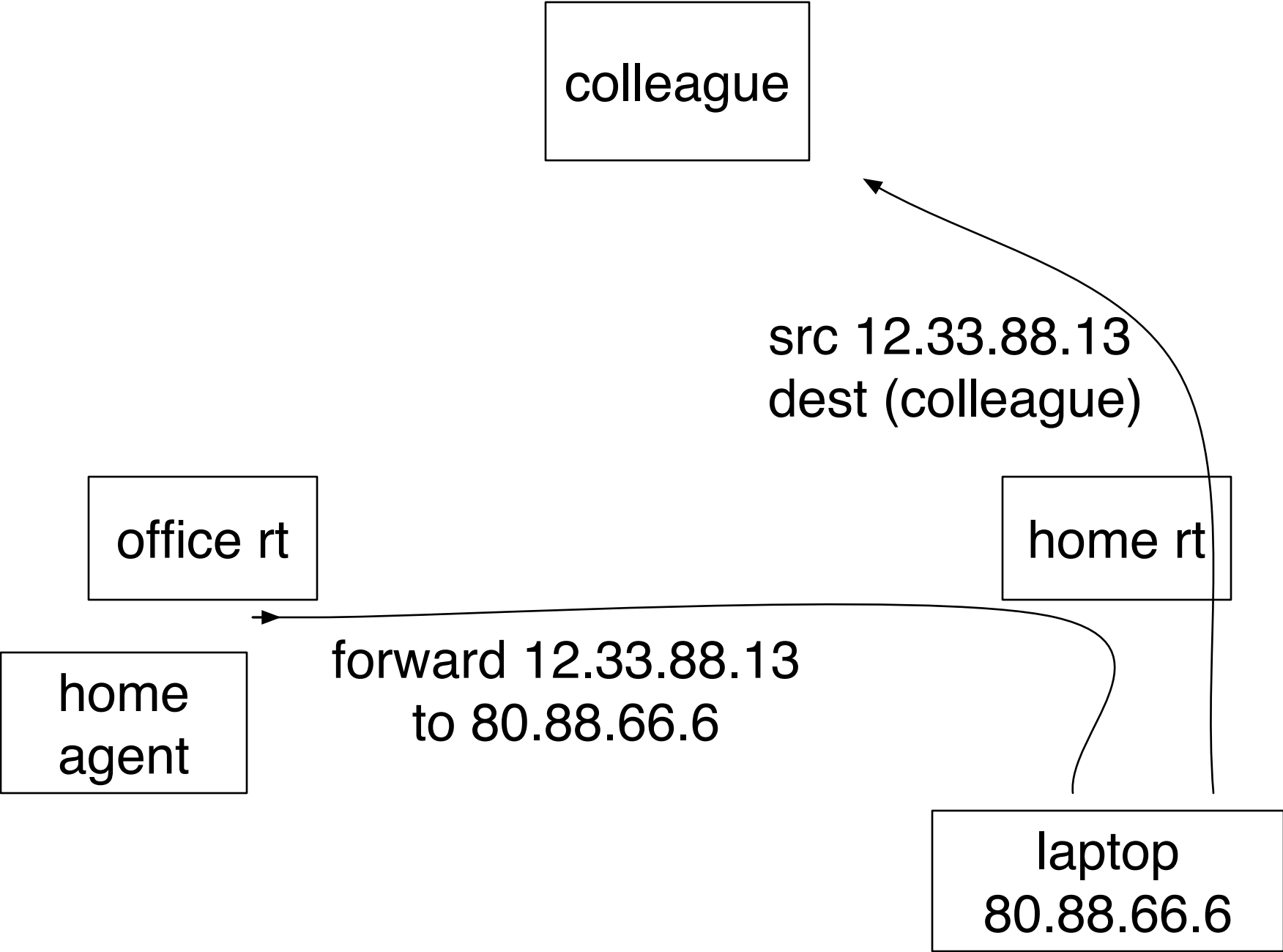
office rt

home rt

home
agent

forward 12.33.88.13
to 80.88.66.6

laptop
80.88.66.6



colleague

VPN

(virtual private network)

src 12.33.88.13
dest (colleague)

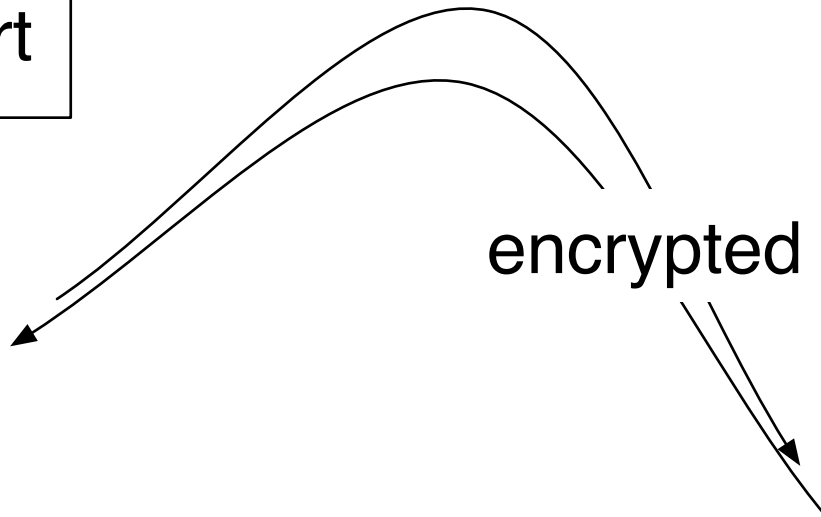
office rt

home rt

home
agent

encrypted

laptop
12.33.88.13



Duplicate creation/transmission

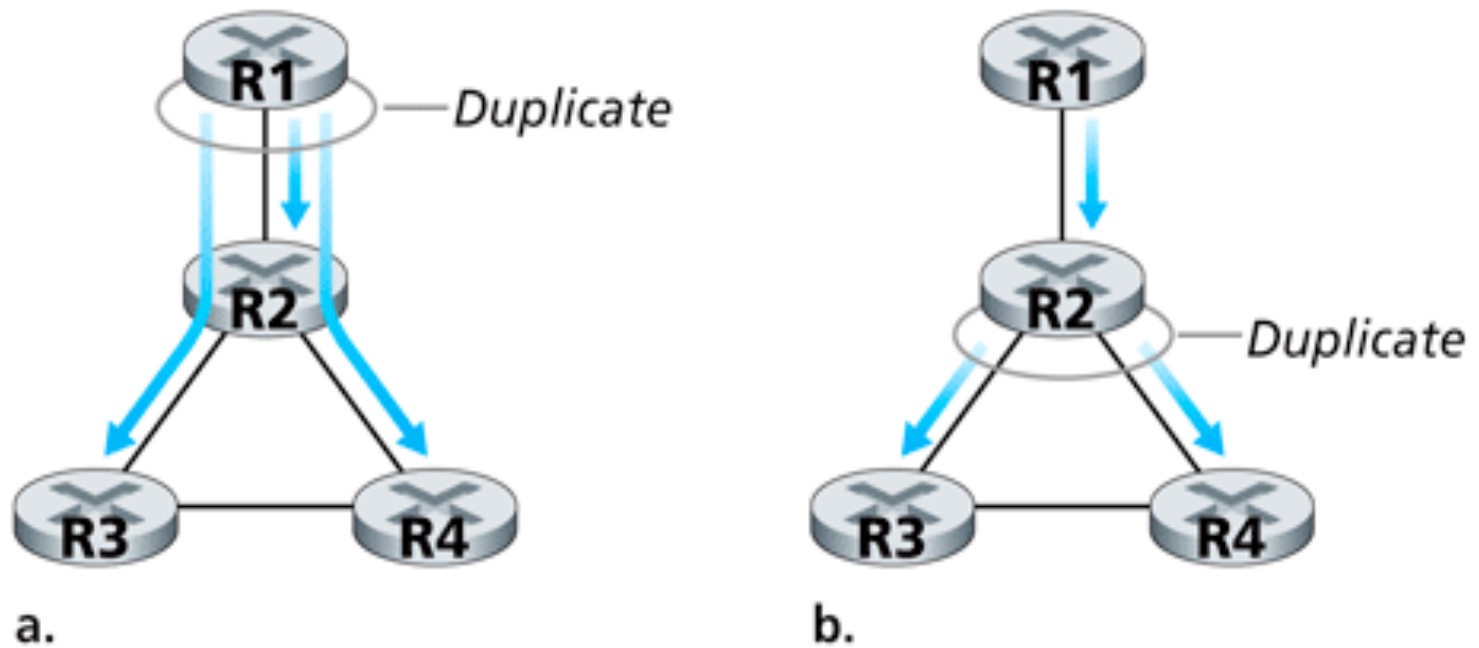
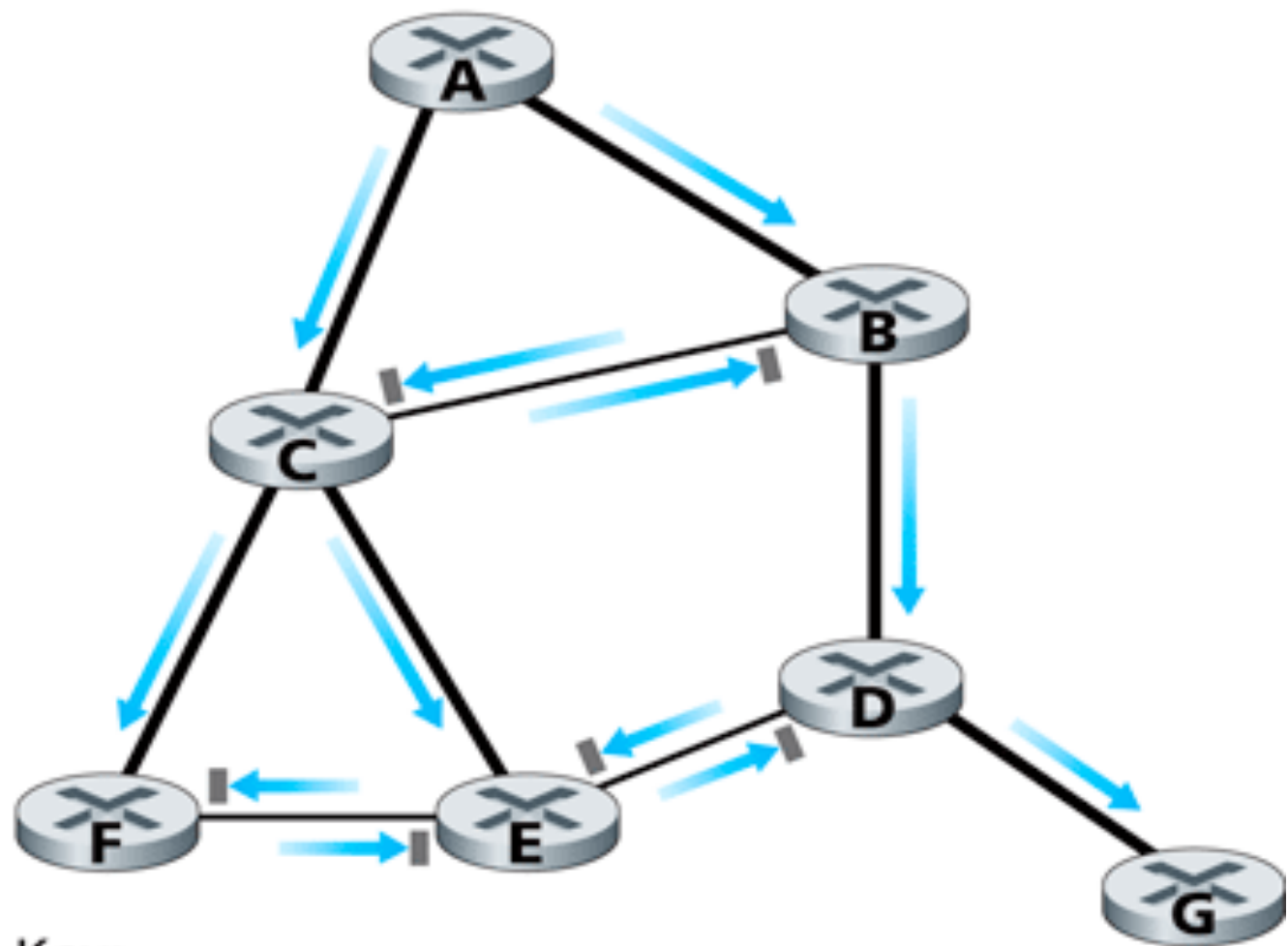


Figure 4.44 ♦ Source-duplication versus in-network duplication



Key:

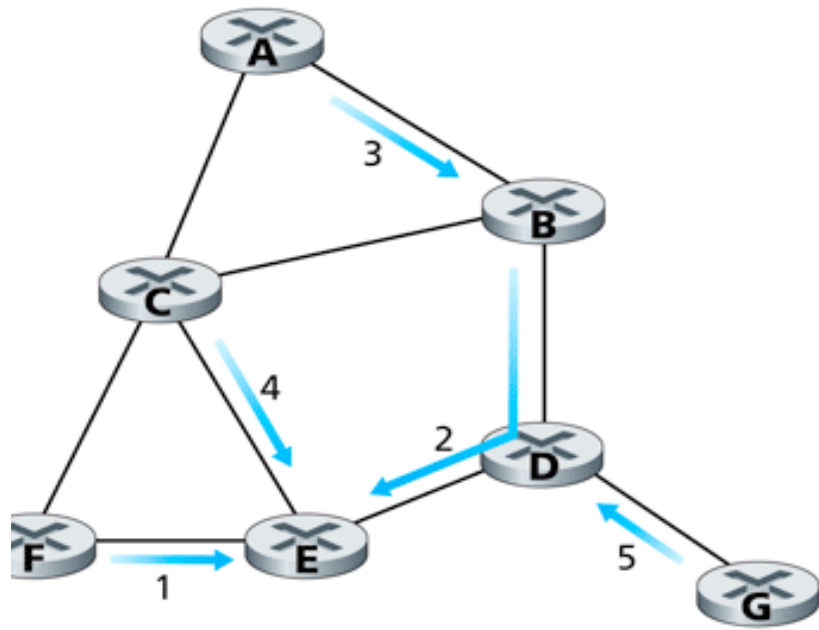


pkt will be forwarded

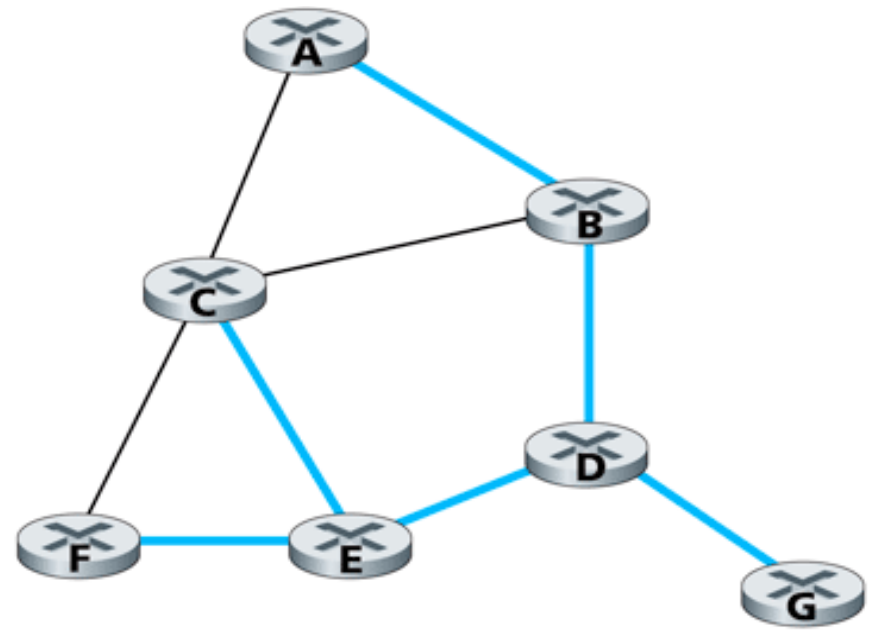


pkt not forwarded beyond receiving router

Figure 4.45 ♦ Reverse path forwarding



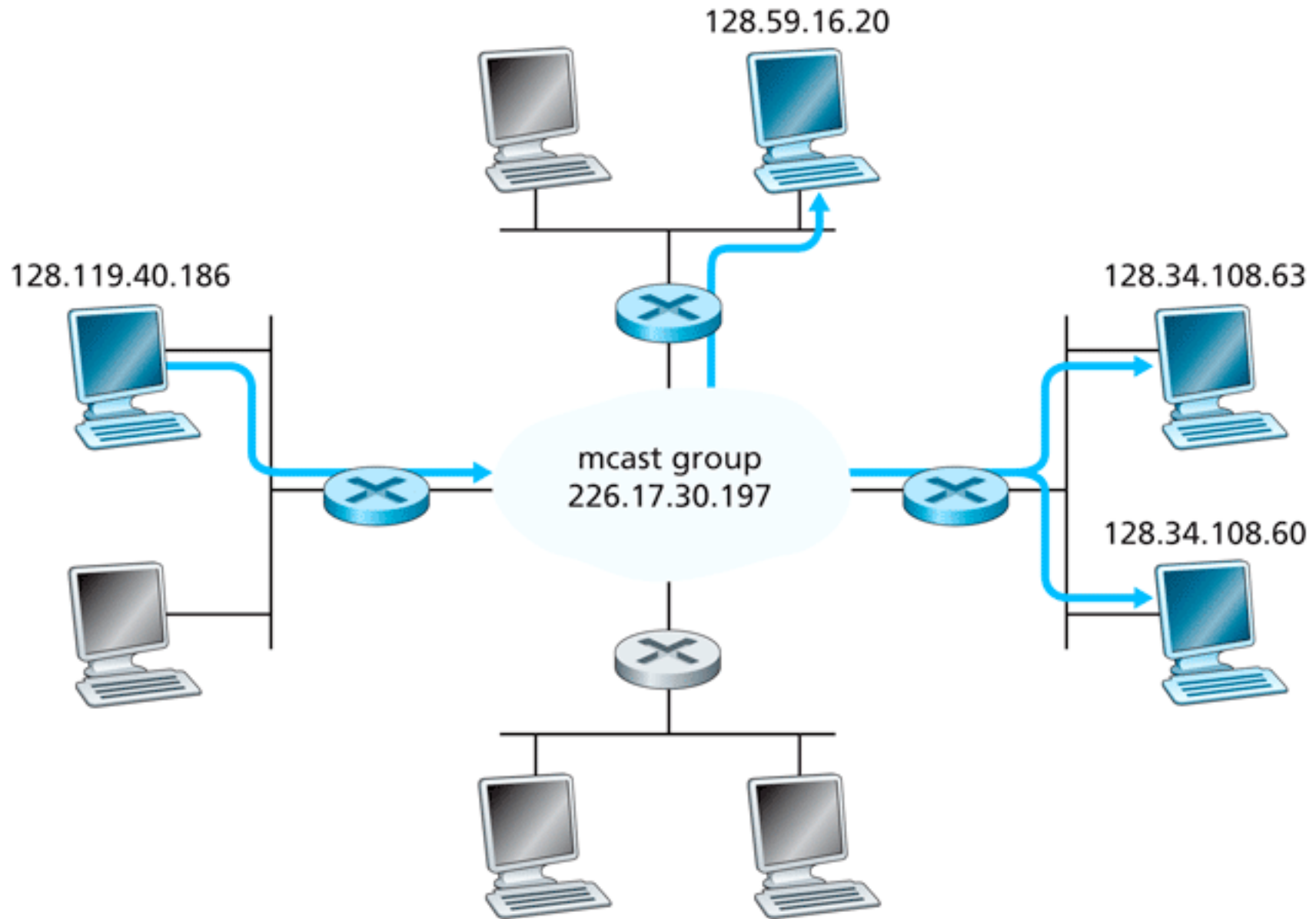
Stepwise construction of spanning tree



b. Constructed spanning tree

Figure 4.47 ♦ Center-based construction of a spanning tree

224.0.0.0/4 - 239.255.255.255



Key:



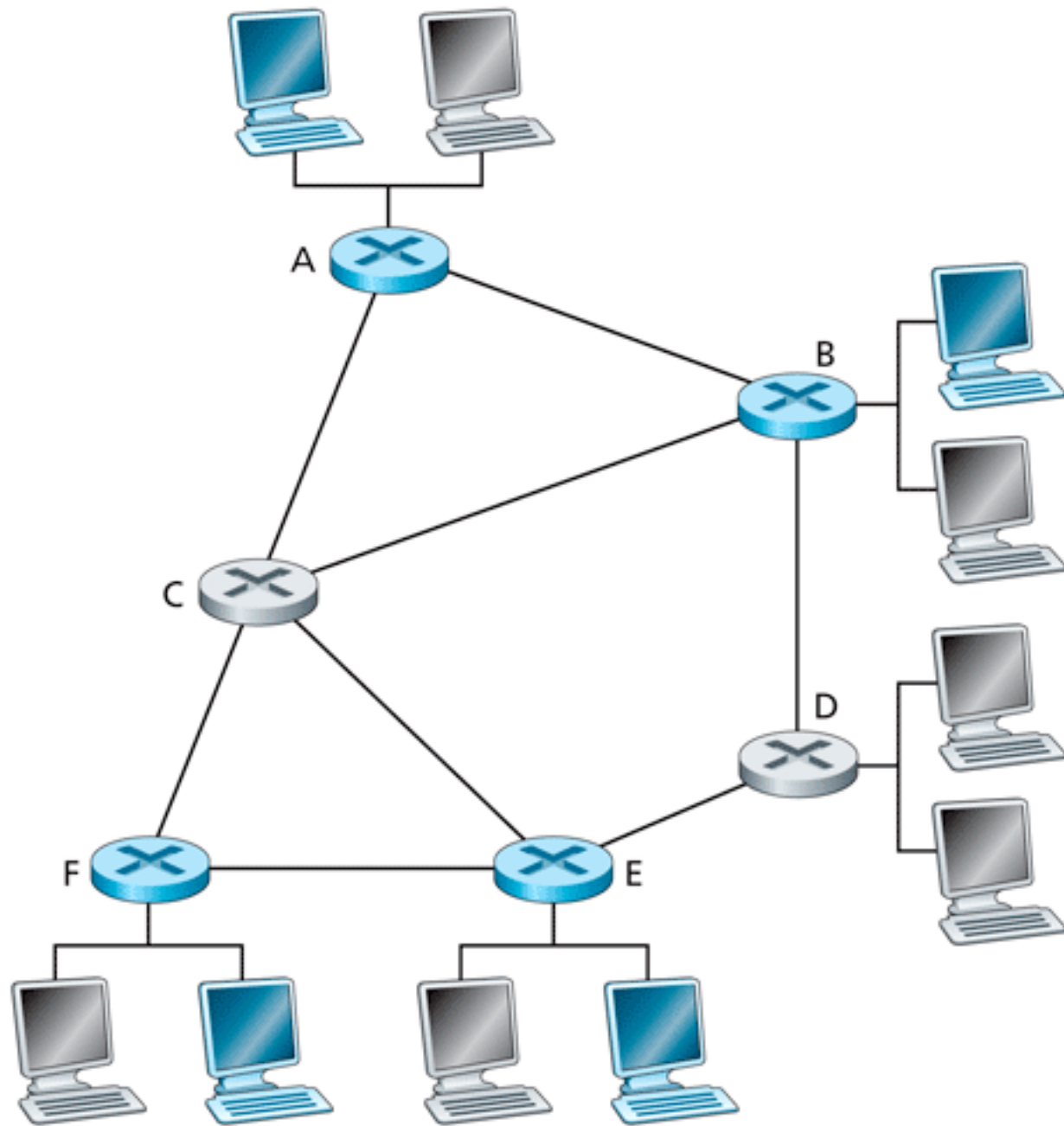


Figure 4.50 ♦ Multicast hosts, their attached routers, and other routers